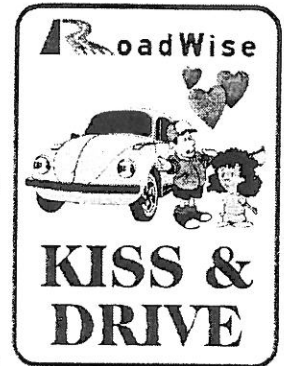


Kiss & Drive



The area around school becomes extremely hazardous especially during the peak afternoon pick up period. This causes concern for parents and can be very distressing for the students.

Your co-operation and patience during the introduction and development of the Kiss and Drive system will provide your children with a safer, less traumatic environment.

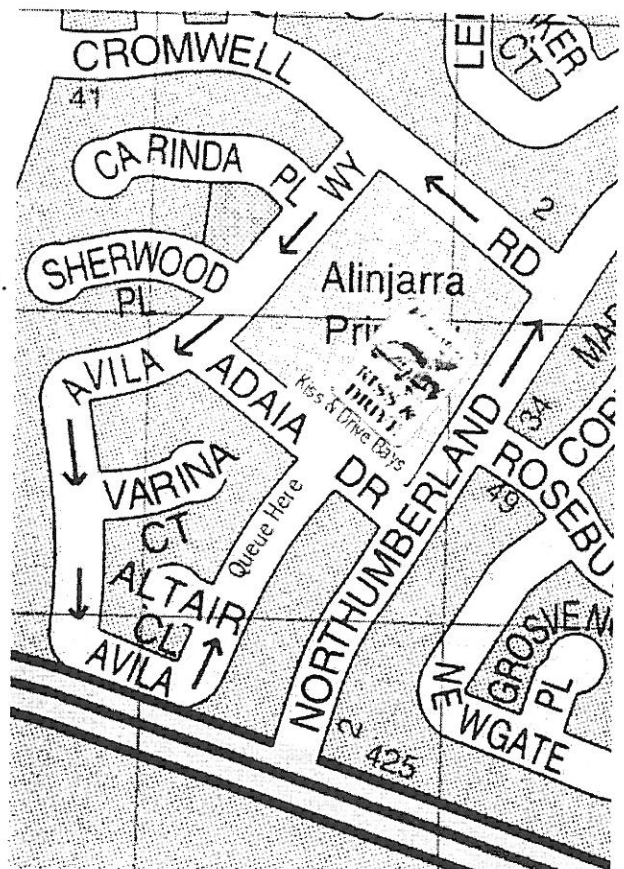
Four bays in Adaia Drive will be designated Kiss & Drive vehicle bays especially set aside for the set-down and pick up of students. The process allows up to ten vehicles to use the same bay in the 10 to 15 minute peak period after school. Volunteer traffic wardens appointed with the approval of the City of Wanneroo will control traffic flow and ensure the operation is carried out with maximum safety.

HOW THE KISS & DRIVE WORKS

- Obey the directions of the voluntary Wardens.
- Move as near to the front of the Kiss & Drive bays as possible .
- Always be courteous to other road users.
- Children will wait (under supervision) in the school grounds near the Kiss & Drive bays.
- Bays to be used only for set down and pick up of students.
- If your child is not ready don't stop – drive around the block and try again.
- No parking permitted in the pick up bays.
- Always indicate to enter and leave the Kiss & Drive bays.
- Ensure children entering the vehicle put on their seat restraint.

BENEFITS

Quicker, safer operation to set down and pick up children.
 Less parking hassles.
 Less waiting.
 Leave home later – get home quicker.
 Increase number of vehicles using the same bay x 10.



HOW TO USE THE KISS & DRIVE AREA

Morning

- Stop in Kiss & Drive bays (use forward most bays).
- Students alight from **left** of vehicle.
- Parents/carers must remain in the vehicle.
- When students clear of vehicle indicate right and enter traffic flow.

Afternoon

- Queue in Avila Way (see attached map for traffic flow).
- Only enter Kiss & Drive area if your children are ready to be picked up.
- If children are not ready drive on around the school and rejoin the queue.
- It is extremely important that you:

Keep the engine running - Apply the handbrake - Stay in the vehicle

